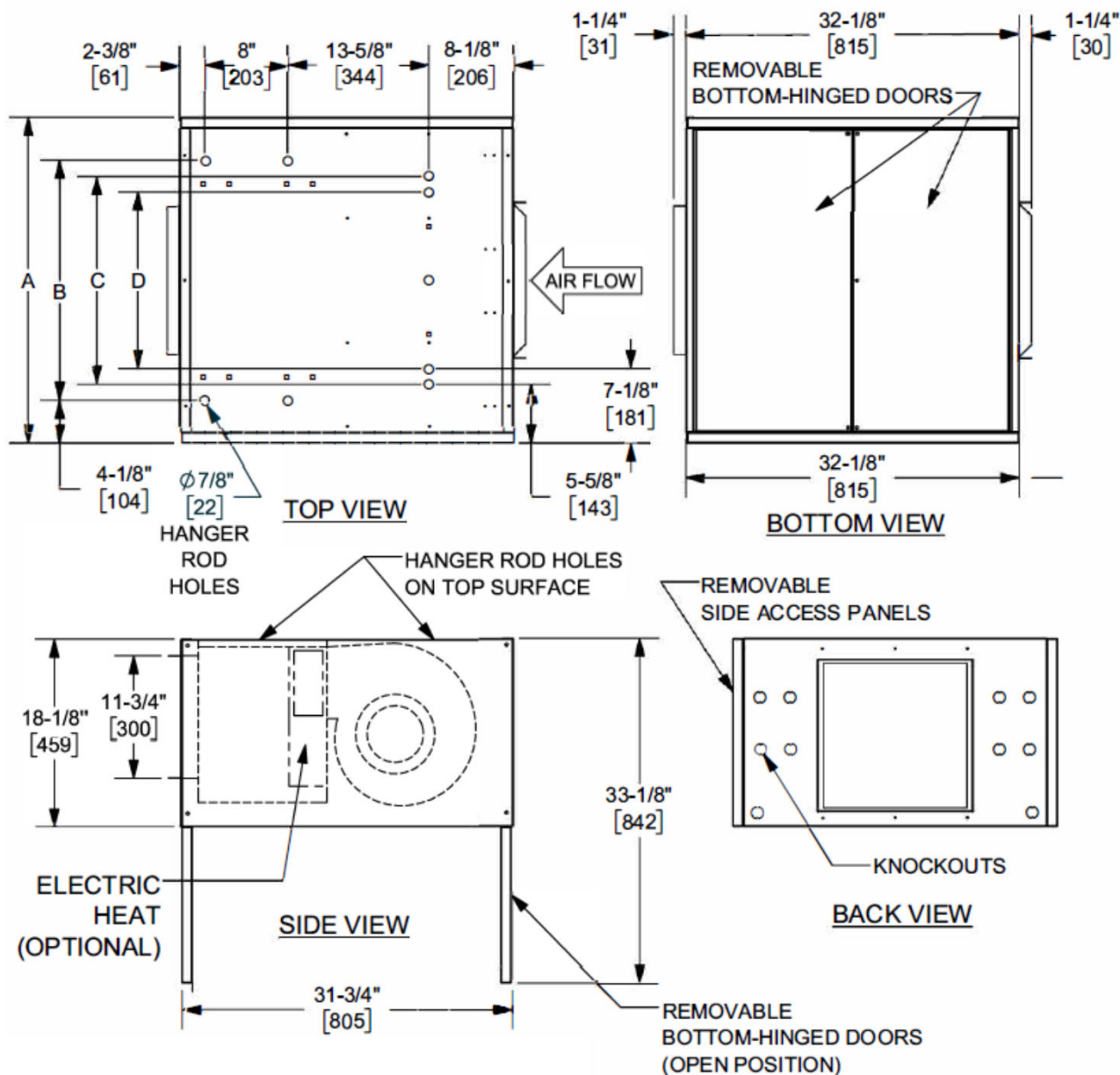


RAHC Series A

Horizontal High Performance Exposed – Ducted Rear Return & Front Supply



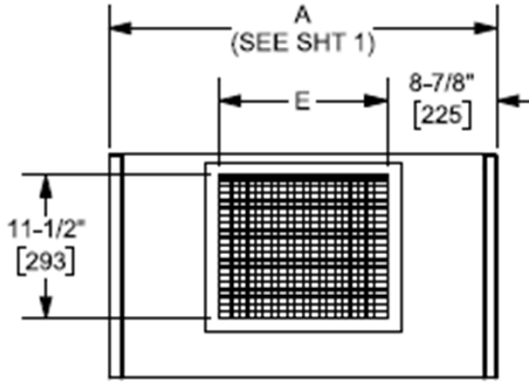
Unit Size	A		B		C		D		A + 6.0" Extended Panel	
	IN	MM	IN	MM	IN	MM	IN	MM	IN	MM
6	31.25	794	23	584	20	508	17	432	37.25	946
8	36.25	921	28	711	25	635	22	559	42.25	1073
10	40.25	1022	32	813	29	737	26	660	46.25	1174
12	45.25	1149	37	940	34	864	31	787	51.25	1302
14	50.25	1276	42	1067	39	991	36	914	56.25	1428
16	55.25	1403	47	1194	44	1118	41	1041	61.25	1556
18	60.25	1530	52	1321	49	1245	46	1168	66.25	1683
20	64.25	1632	56	1422	53	1346	50	1270	70.25	1784

NOTES:

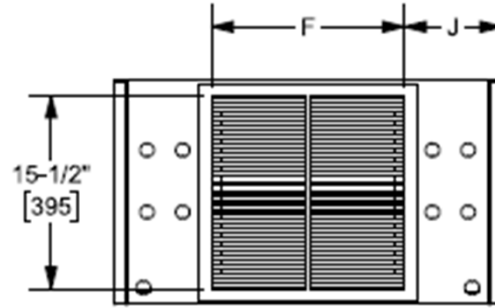
1. All dimensions in Inches [millimeters]. All dimensions $\pm 1/4"$ [6mm]. Metric values are soft conversion.
2. Right hand Ducted unit shown, Left hand unit opposite.
3. Standard control enclosure is mounted inside unit opposite cooling coil connections and includes (4) knockouts on (2) sides. Provide sufficient clearance to access electrical controls and comply with applicable codes and ordinances.

RAHC Series A

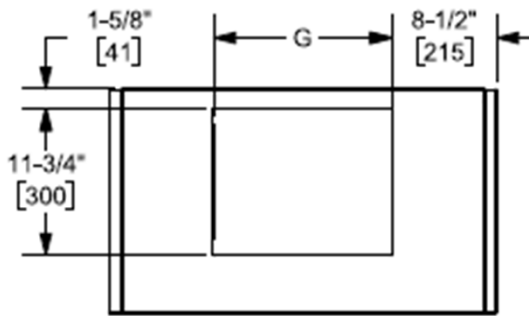
Horizontal High Performance Exposed – Ducted & Grilled Rear Return & Front Supply



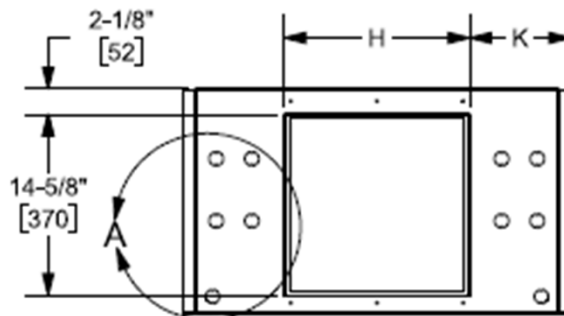
**FRONT PANEL
GRILLED SUPPLY**



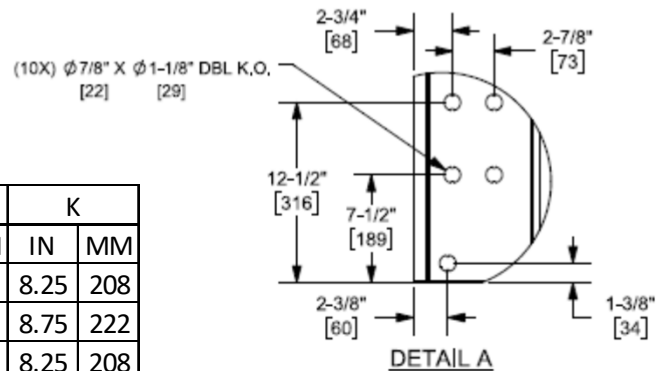
**BACK PANEL
GRILLED RETURN**



**FRONT PANEL
DUCTED SUPPLY**



**BACK PANEL
DUCTED RETURN**



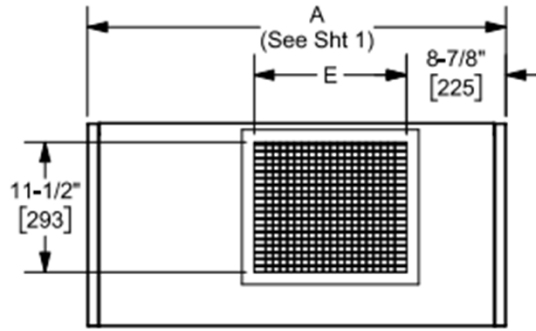
Unit Size	E		F		G		H		J		K	
	IN	MM	IN	MM	IN	MM	IN	MM	IN	MM	IN	MM
6	13.50	344	15.50	394	14.38	365	15	381	7.88	200	8.25	208
8	17.50	445	19.50	495	19.38	492	19	483	8.38	213	8.75	222
10	22.50	572	24.50	622	23.38	594	24	610	7.88	200	8.25	208
12	29.50	749	31.50	800	28.38	721	31	787	6.88	175	7.25	184
14	33.50	851	35.50	902	33.38	848	35	889	7.38	187	7.75	197
16	37.50	953	39.50	1003	38.38	975	39	991	7.88	200	8.25	208
18	42.50	1080	44.50	1130	43.38	1102	44	1118	7.88	200	8.25	208
20	47.50	1207	44.50	1130	47.38	1203	49	1245	9.88	251	7.75	197

NOTES:

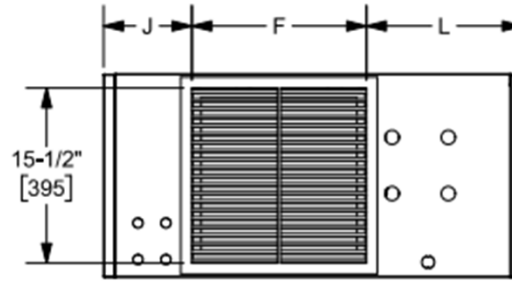
1. All dimensions in Inches [millimeters]. All dimensions ±1/4" [6mm]. Metric values are soft conversion.
2. Right hand unit shown, Left hand unit opposite.
3. Standard control enclosure is mounted inside unit opposite cooling coil connections and includes (4) knockouts on (2) sides. Provide sufficient clearance to access electrical controls and comply with applicable codes and ordinances.

RAHC Series A

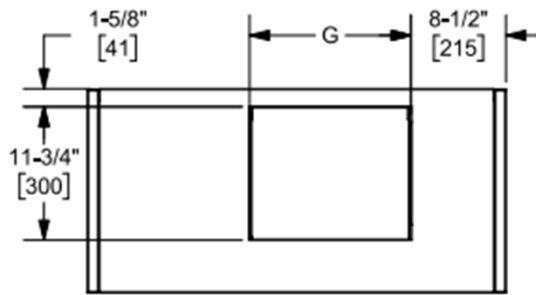
Horizontal High Performance Exposed – Extended Panel, Ducted & Grilled Front Supply & Rear Return



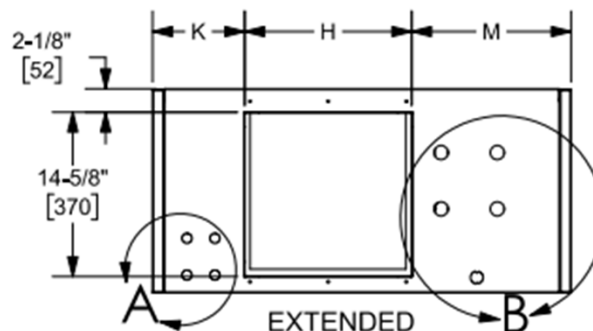
EXTENDED FRONT PANEL GRILLED SUPPLY



EXTENDED BACK PANEL GRILLED RETURN



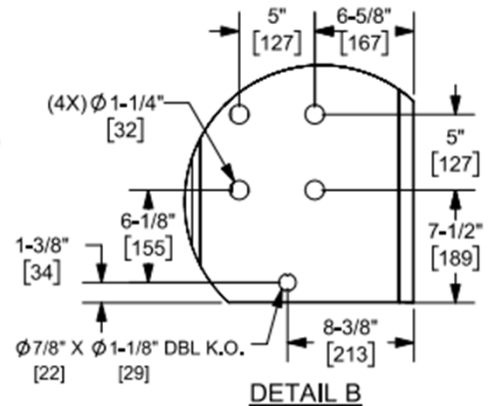
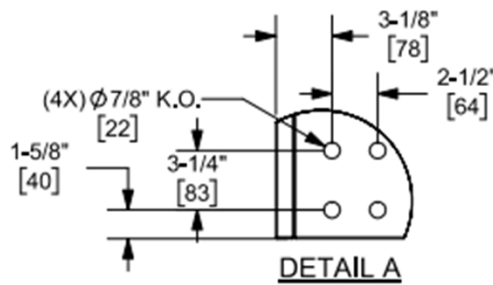
EXTENDED FRONT PANEL DUCTED SUPPLY



EXTENDED BACK PANEL DUCTED RETURN

NOTES:

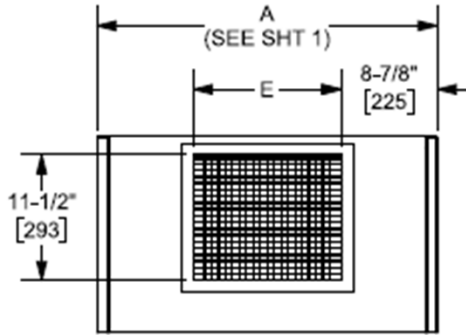
1. All dimensions in Inches [millimeters]. All dimensions $\pm 1/4"$ [6mm]. Metric values are soft conversion.
2. Right hand unit shown, Left hand unit opposite.
3. Standard control enclosure is mounted inside unit opposite cooling coil connections and includes (4) knockouts on (2) sides. Provide sufficient clearance to access electric controls and comply with applicable codes and ordinances.
4. Extended cabinet is only offered when 3-way valve package is selected.



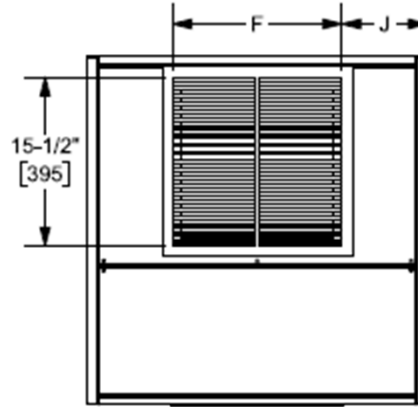
Unit Size	E		F		G		H		J		K		L		M	
	IN	MM	IN	MM	IN	MM	IN	MM	IN	MM	IN	MM	IN	MM	IN	MM
6	13.50	344	15.50	394	14.38	365	15	381	7.88	200	8.25	208	13.88	352	14.25	362
8	17.50	445	19.50	495	19.38	492	19	483	8.38	213	8.75	222	14.38	365	14.75	375
10	22.50	572	24.50	622	23.38	594	24	610	7.88	200	8.25	208	13.88	352	14.25	362
12	29.50	749	31.50	800	28.38	721	31	787	6.88	175	7.25	184	12.88	327	13.25	337
14	33.50	851	35.50	902	33.38	848	35	889	7.38	187	7.75	197	13.38	340	13.75	349
16	37.50	953	39.50	1003	38.38	975	39	991	7.88	200	8.25	208	13.88	352	14.25	362
18	42.50	1080	44.50	1130	43.38	1102	44	1118	7.88	200	8.25	208	13.88	352	14.25	362
20	47.50	1207	44.50	1130	47.38	1203	49	1245	9.88	251	7.75	197	15.88	340	13.75	349

RAHC Series A

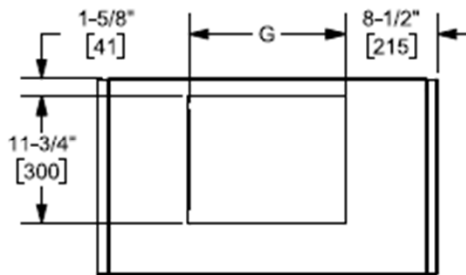
Horizontal High Performance Exposed – Ducted & Grilled Front Supply & Bottom Return



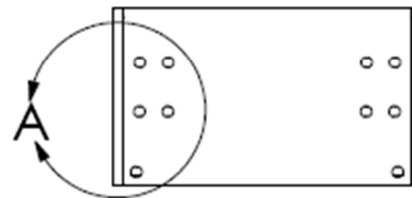
**FRONT PANEL
GRILLED SUPPLY**



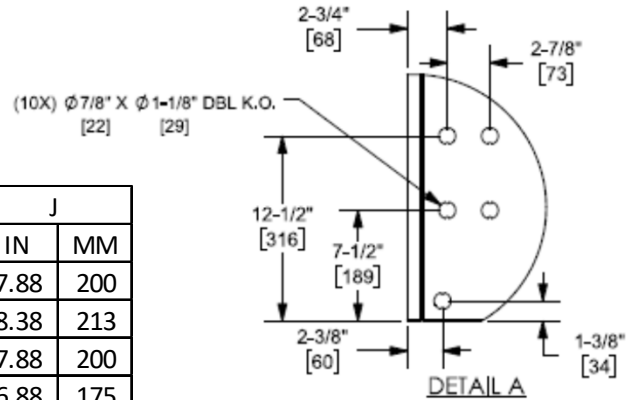
**BOTTOM PANEL
GRILLED RETURN**



**FRONT PANEL
DUCTED SUPPLY**



BACK PANEL



DETAIL A

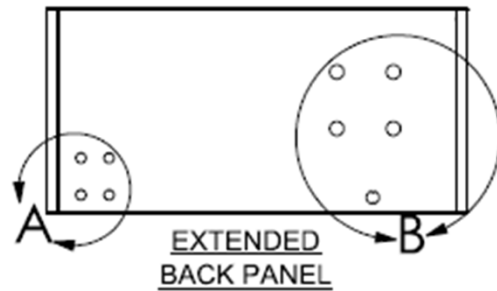
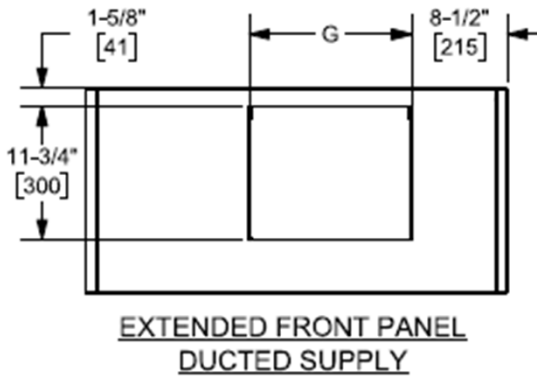
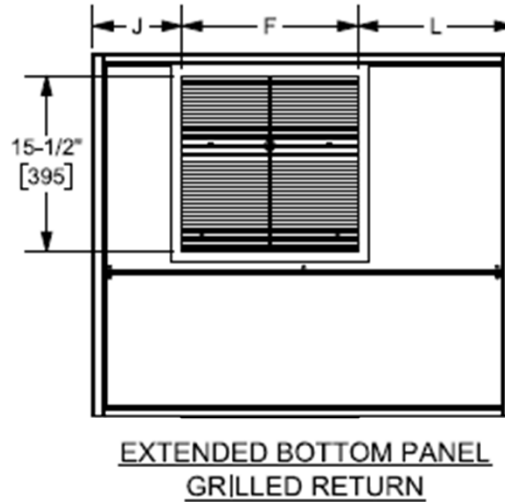
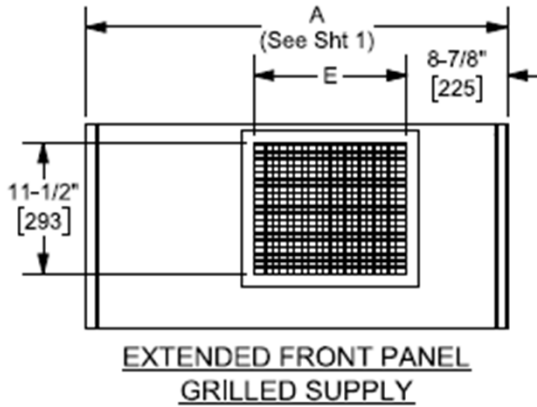
Unit Size	E		F		G		J	
	IN	MM	IN	MM	IN	MM	IN	MM
6	13.50	344	15.50	394	14.38	365	7.88	200
8	17.50	445	19.50	495	19.38	492	8.38	213
10	22.50	572	24.50	622	23.38	594	7.88	200
12	29.50	749	31.50	800	28.38	721	6.88	175
14	33.50	851	35.50	902	33.38	848	7.38	187
16	37.50	953	39.50	1003	38.38	975	7.88	200
18	42.50	1080	44.50	1130	43.38	1102	7.88	200
20	47.50	1207	44.50	1130	47.38	1203	9.88	187

NOTES:

1. All dimensions in Inches [millimeters]. All dimensions $\pm 1/4"$ [6mm]. Metric values are soft conversion.
2. Right hand unit shown, Left hand unit opposite.
3. Standard control enclosure is mounted inside unit opposite cooling coil connections and includes (4) knockouts on (2) sides. Provide sufficient clearance to access electrical controls and comply with applicable codes and ordinances.

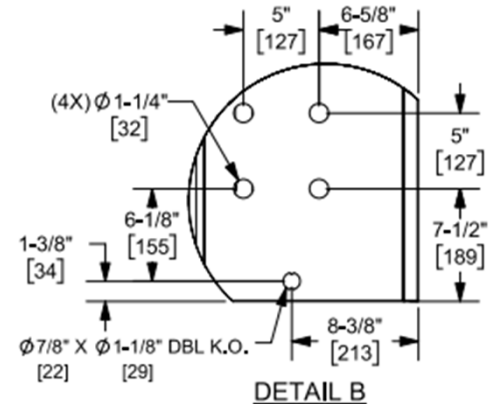
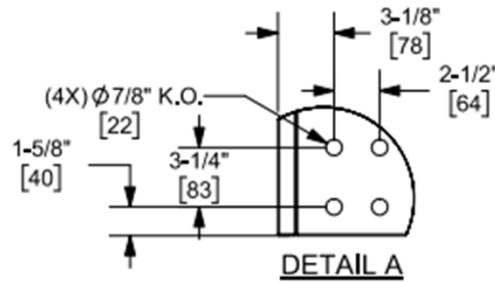
RAHC Series A

Horizontal High Performance Exposed – Extended Panel, Ducted & Grilled Front Supply & Bottom Return



NOTES:

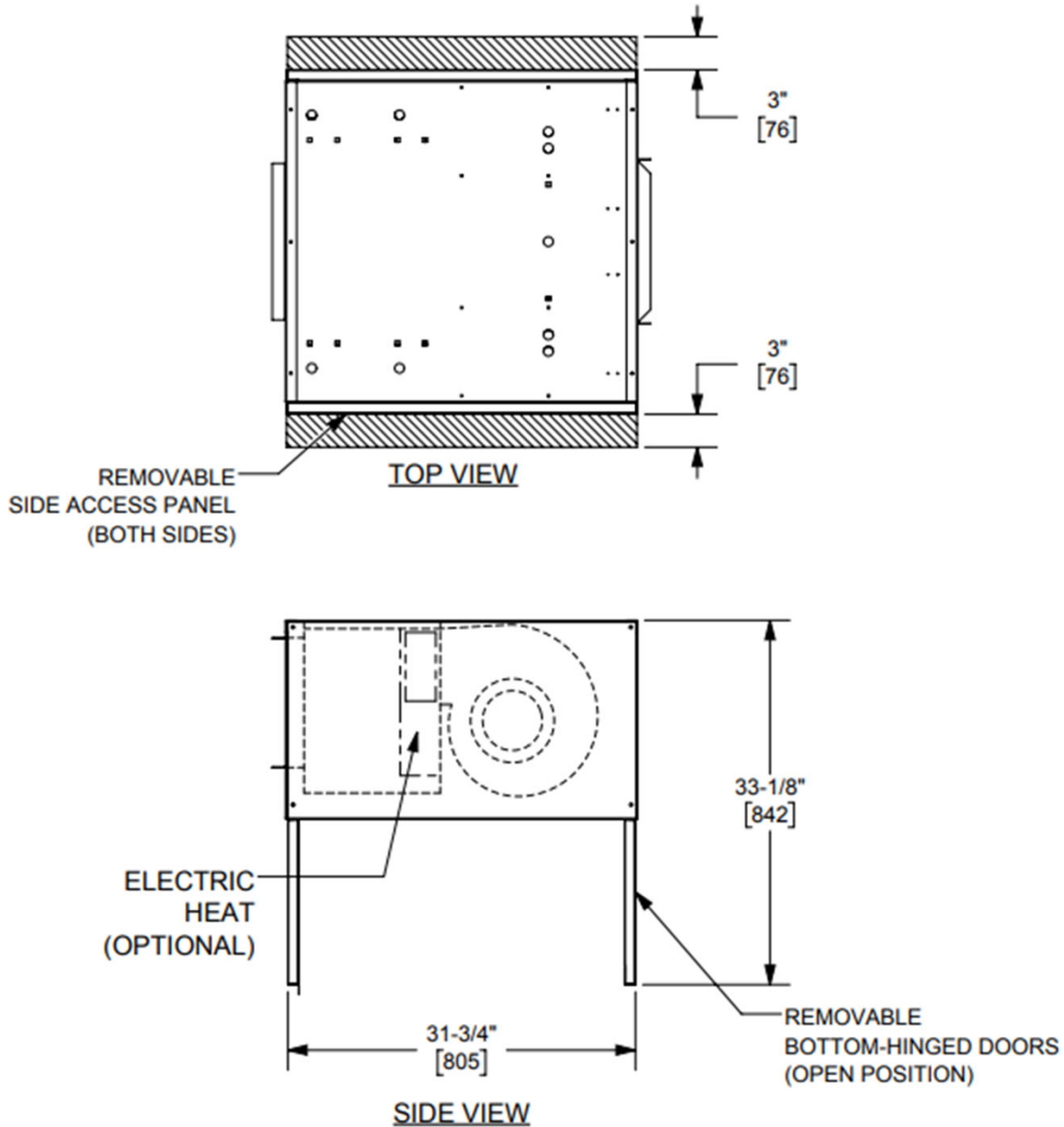
1. All dimensions in Inches [millimeters]. All dimensions $\pm 1/4$ " [6mm]. Metric values are soft conversion.
2. Right hand unit shown, Left hand unit opposite.
3. Standard control enclosure is mounted inside unit opposite cooling coil connections and includes (4) knockouts on (2) sides. Provide sufficient clearance to access electric controls and comply with applicable codes and ordinances.
4. Extended cabinet is only offered when 3-way valve package is selected.



Unit Size	E		F		G		H		J		K		L		M	
	IN	MM	IN	MM	IN	MM	IN	MM	IN	MM	IN	MM	IN	MM	IN	MM
6	13.50	344	15.50	394	14.38	365	15	381	7.88	200	8.25	208	13.88	352	14.25	362
8	17.50	445	19.50	495	19.38	492	19	483	8.38	213	8.75	222	14.38	365	14.75	375
10	22.50	572	24.50	622	23.38	594	24	610	7.88	200	8.25	208	13.88	352	14.25	362
12	29.50	749	31.50	800	28.38	721	31	787	6.88	175	7.25	184	12.88	327	13.25	337
14	33.50	851	35.50	902	33.38	848	35	889	7.38	187	7.75	197	13.38	340	13.75	349
16	37.50	953	39.50	1003	38.38	975	39	991	7.88	200	8.25	208	13.88	352	14.25	362
18	42.50	1080	44.50	1130	43.38	1102	44	1118	7.88	200	8.25	208	13.88	352	14.25	362
20	47.50	1207	44.50	1130	47.38	1203	49	1245	9.88	251	7.75	197	15.88	340	13.75	349

RAHC Series A

Horizontal High Performance Exposed – External Space Requirements

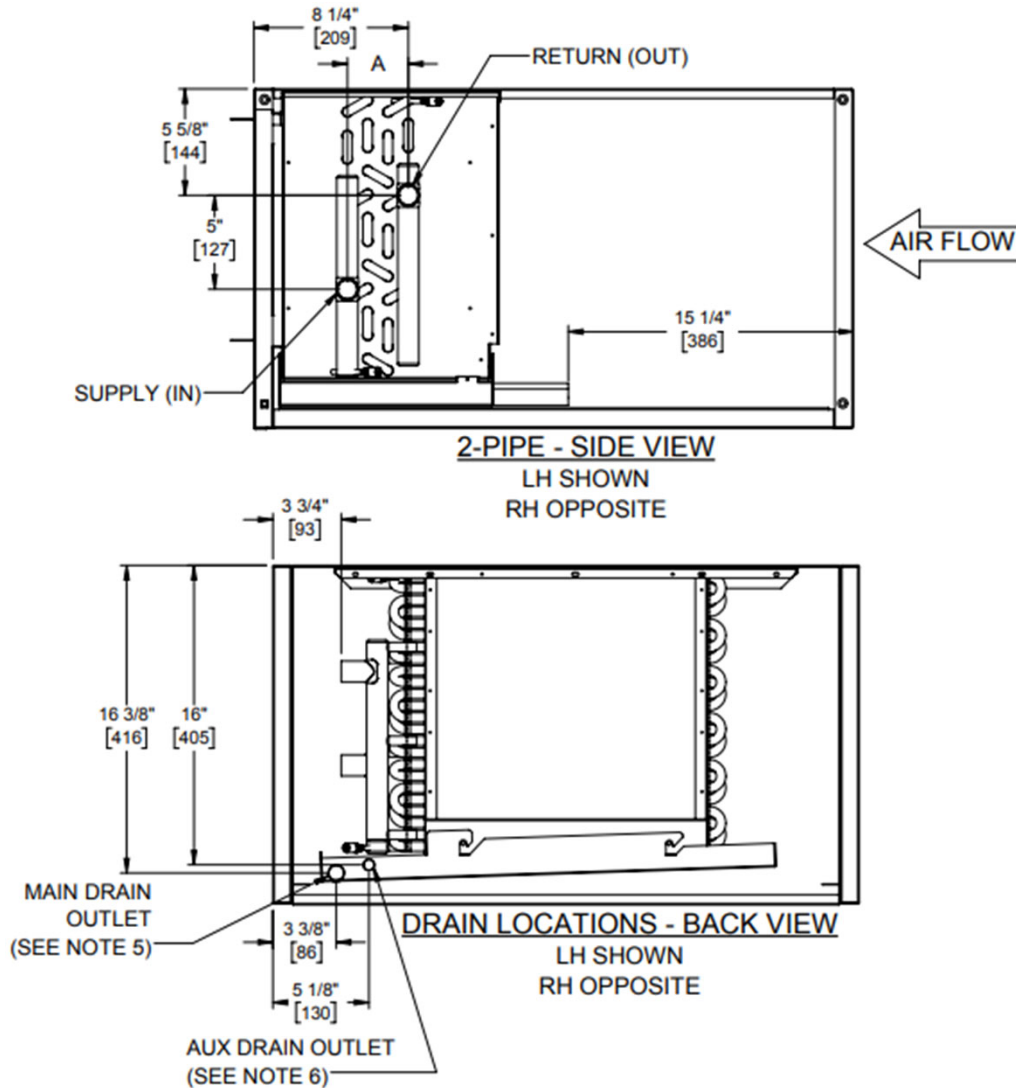


NOTES:

1. All chilled water piping that projects beyond the condensate pan or the optional auxiliary drip pan must be field insulated by others.
2. Optional Auxiliary Drip Pan (not shown) is mounted on the outlet side of the drain pan.
3. Drain Pan is installed with the outlet tube(s) on cooling coil connection end of coil on 4-pipe units with optional opposite end connection.
4. Dimensions shown on this drawing apply to standard CW and HW valve packages. Refer to the Piping Package Catalog for valve package code details. Contact factory for details on valve packages using non-standard or customer furnished components.
5. Provide sufficient clearance to access electrical components and comply with all applicable codes and ordinances.

RAHC Series A

Horizontal High Performance Exposed – Field Connections – 2 Pipe HW & 2 Pipe CW



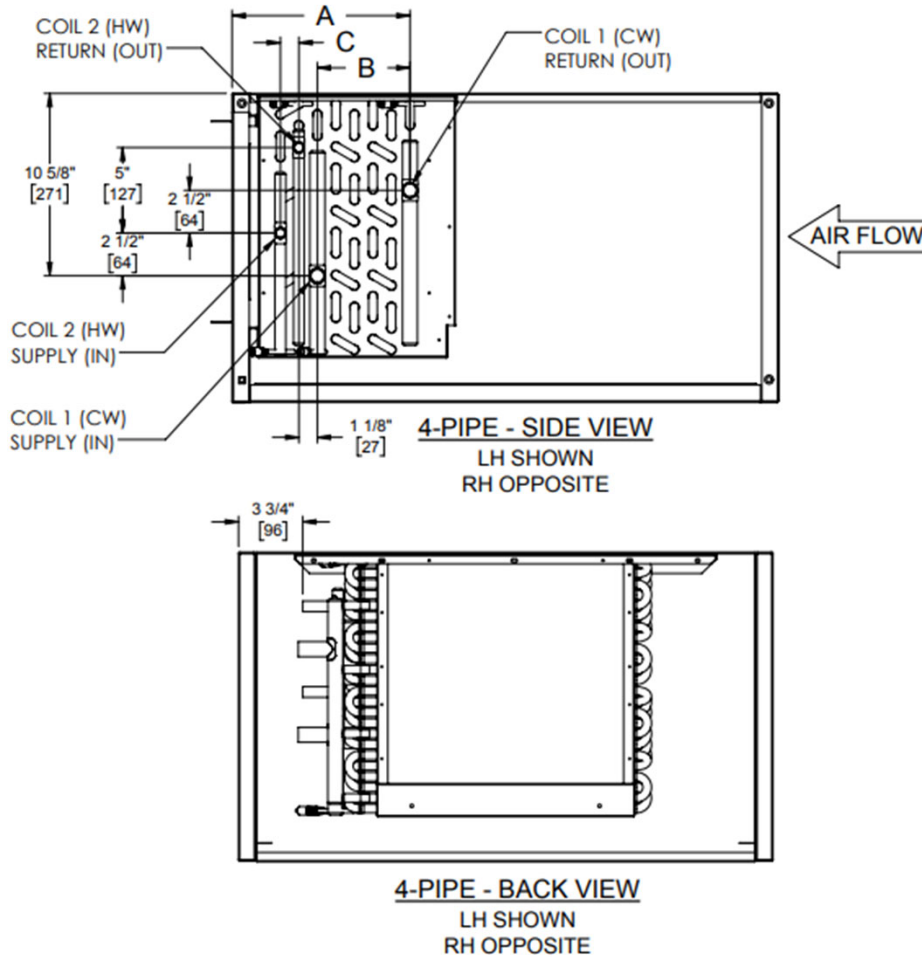
Unit Type	Coil Rows	A (1/2" Dia Tubing)		A (3/8" Dia Tubing)	
		IN	MM	IN	MM
2 Pipe Heating	1	1.13	29	0.88	22
	2	1.13	29	0.88	22
	3	2.13	54	1.75	44
	4	3.25	83	2.63	67
2 Pipe Cooling	3	2.13	54	1.75	44
	4	3.25	83	2.63	67
	6	5.38	137	4.38	86

NOTES:

1. All dimensions are inches [millimeters] All dimensions 1/2 [13mm]. Metric values are soft conversion.
2. All drawings subject to change without notice.
3. Model "RAHCA" unit shown. Side panel hidden for clarity.
4. Connection Size: See Page 12 Coil Connections.
5. Standard externally foam coated galvanize steel drain pan has 7/8" ODM copper outlet. Stainless steel drain pan has 3/4" MPT galvanized steel outlet.
6. Aux. drain outlet is 5/8" ODM copper or 3/8" MPT galvanized steel respectively.
7. Single Row/Single Circuit headers are vertical (Horizontal Distance is 0")

RAHC Series A

Horizontal High Performance Exposed – Field Connections – 4 Pipe 1/2" Dia. Tubing Re-Heat



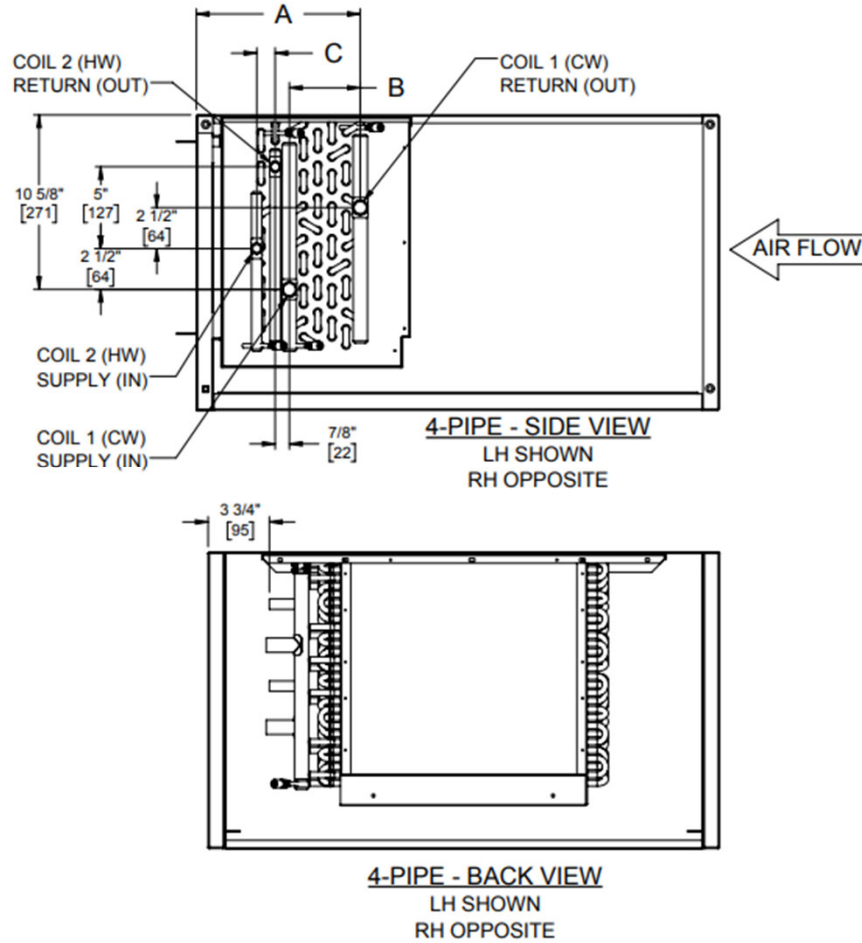
Unit Type	Coil 1 CW Rows	Coil 2 HW Rows	(1/2" Dia Tubing)					
			A		B		C	
			IN	MM	IN	MM	IN	MM
4 Pipe ReHeat	3	1	8.25	210	1.63	41	1.25	32
	3	2	8.25	210	1.88	48	1.13	29
	3	3	8.25	210	2.00	51	2.25	57
	4	1	8.25	210	3.00	76	1.25	32
	4	2	8.25	210	3.00	76	1.13	29
	3	4	10.38	264	2.00	51	3.25	83
	4	3	10.38	264	3.25	83	2.00	51
	4	4	10.38	264	3.25	83	3.25	83
	6	1	10.38	264	5.00	127	1.13	29
	6	2	10.38	264	5.25	133	1.13	29

NOTES:

- All dimensions are inches [millimeters] All dimensions 1/2 [13mm]. Metric values are soft conversion.
- All drawings subject to change without notice.
- Model "RAHCA" unit shown. Side panel and drain pan hidden for clarity.
- Connection Size: See Page 12 Coil Connections.
- Standard externally foam coated galvanize steel drain pan has 7/8" ODM copper outlet. Stainless steel drain pan has 3/4" MPT galvanize steel outlet.
- Aux. drain outlet is 5/8" ODM copper or 3/8" MPT galvanized steel respectively.
- Single Row/Single Circuit headers are vertical (Horizontal Distance is 0")

RAHC Series A

Horizontal High Performance Exposed – Field Connections – 4 Pipe 3/8” Dia. Tubing Re-Heat



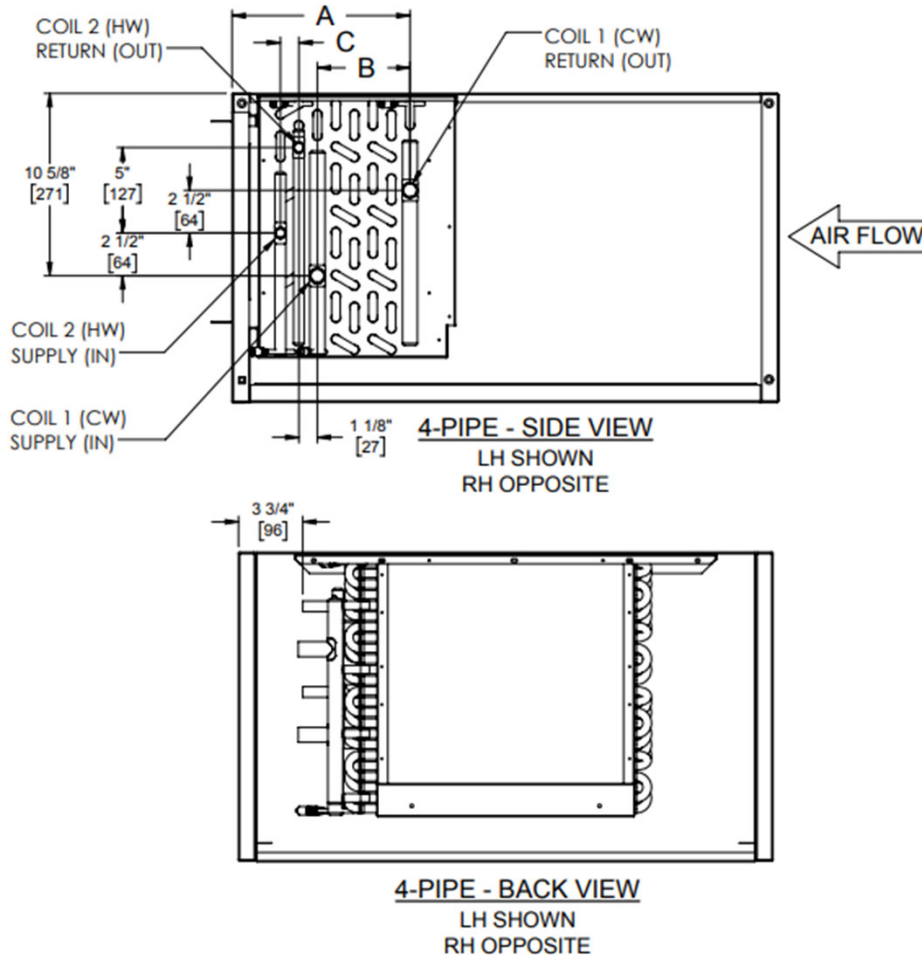
Unit Type	Coil 1 CW Rows	Coil 2 HW Rows	(3/8" Dia Tubing)					
			A		B		C	
			IN	MM	IN	MM	IN	MM
4 Pipe ReHeat	3	1	8.25	210	1.50	38	1.00	25
	3	2	8.25	210	1.38	35	1.00	25
	3	3	8.25	210	1.75	44	1.50	38
	4	1	8.25	210	1.75	44	1.00	25
	4	2	8.25	210	2.25	57	1.00	25
	3	4	10.38	264	1.50	38	2.63	67
	4	3	10.38	264	2.63	67	1.50	38
	4	4	10.38	264	2.63	67	2.25	57
	6	1	10.38	264	3.50	89	1.00	25
6	2	10.38	264	4.00	102	1.00	25	

NOTES:

1. All dimensions are inches [millimeters] All dimensions 1/2 [13mm]. Metric values are soft conversion.
2. All drawings subject to change without notice.
3. Model "RAHCA" unit shown. Side panel and drain pan hidden for clarity.
4. Connection Size: See Page 12 Coil Connections.
5. Standard externally foam coated galvanize steel drain pan has 7/8" ODM copper outlet. Stainless steel drain pan has 3/4" MPT galvanize steel outlet.
6. Aux. drain outlet is 5/8" ODM copper or 3/8" MPT galvanized steel respectively.
7. Single Row/Single Circuit headers are vertical (Horizontal Distance is 0")

RAHC Series A

Horizontal High Performance Exposed – Field Connections – 4 Pipe 1/2" Dia. Tubing Pre-Heat



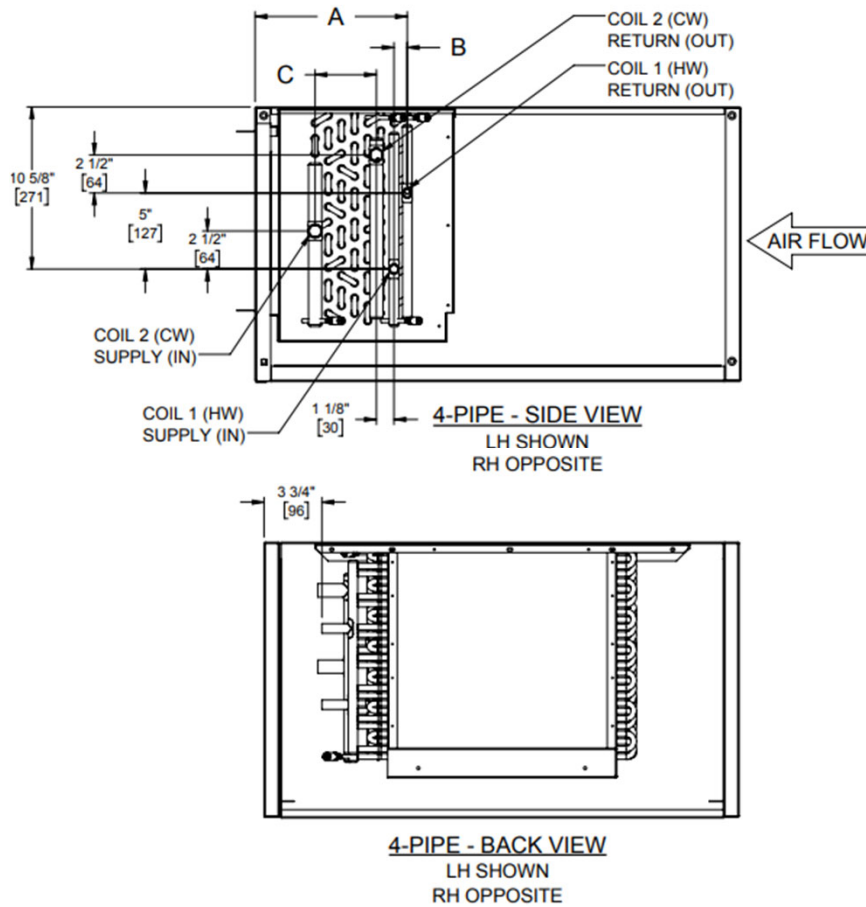
Unit Type	Coil 1 HW Rows	Coil 2 CW Rows	(1/2" Dia Tubing)					
			A		B		C	
			IN	MM	IN	MM	IN	MM
4 Pipe PreHeat	1	3	9.13	232	1.13	29	1.63	41
	1	4	9.13	232	1.13	29	2.50	64
	2	3	8.25	210	1.13	29	2.13	54
	2	4	8.25	210	1.13	29	3.13	79
	3	3	8.25	210	2.13	54	2.00	51
	1	6	11.13	283	1.13	29	4.75	121
	2	6	10.38	264	1.13	29	5.25	133
	3	4	10.38	264	2.13	54	3.13	79
	4	3	10.38	264	3.25	83	2.13	54
	4	4	10.38	264	3.25	83	3.13	79

NOTES:

1. All dimensions are inches [millimeters] All dimensions 1/2 [13mm]. Metric values are soft conversion.
2. All drawings subject to change without notice.
3. Model "RAHCA" unit shown. Side panel and drain pan hidden for clarity.
4. Connection Size: See Page 12 Coil Connections.
5. Standard externally foam coated galvanize steel drain pan has 7/8" ODM copper outlet. Stainless steel drain pan has 3/4" MPT galvanize steel outlet.
6. Aux. drain outlet is 5/8" ODM copper or 3/8" MPT galvanized steel respectively.
7. Single Row/Single Circuit headers are vertical (Horizontal Distance is 0")

RAHC Series A

Horizontal High Performance Exposed – Field Connections – 4 Pipe 3/8” Dia. Tubing Pre-Heat



Unit Type	Coil 1 HW Rows	Coil 2 CW Rows	(3/8" Dia Tubing)					
			A		B		C	
			IN	MM	IN	MM	IN	MM
4 Pipe PreHeat	1	3	9.00	229	1.00	25	1.50	38
	1	4	9.00	229	1.00	25	1.75	44
	2	3	8.25	210	1.00	25	1.50	38
	2	4	8.25	210	1.00	25	2.00	51
	3	3	8.25	210	1.75	44	1.50	38
	1	6	10.75	273	1.00	25	3.50	89
	2	6	10.00	254	1.00	25	3.75	95
	3	4	10.00	254	1.75	44	2.25	57
	4	3	10.00	254	2.63	67	1.50	38
	4	4	10.00	254	2.63	67	2.25	57

NOTES:

1. All dimensions are inches [millimeters] All dimensions 1/2 [13mm]. Metric values are soft conversion.
2. All drawings subject to change without notice.
3. Model "RAHCA" unit shown. Side panel and drain pan hidden for clarity.
4. Connection Size: See Page 12 Coil Connections.
5. Standard externally foam coated galvanize steel drain pan has 7/8" ODM copper outlet. Stainless steel drain pan has 3/4" MPT galvanize steel outlet.
6. Aux. drain outlet is 5/8" ODM copper or 3/8" MPT galvanized steel respectively.
7. Single Row/Single Circuit headers are vertical (Horizontal Distance is 0")

RAHR/RAHO/RAHC Series A

Horizontal High Performance Concealed, Concealed Plenum & Exposed Coil Connections

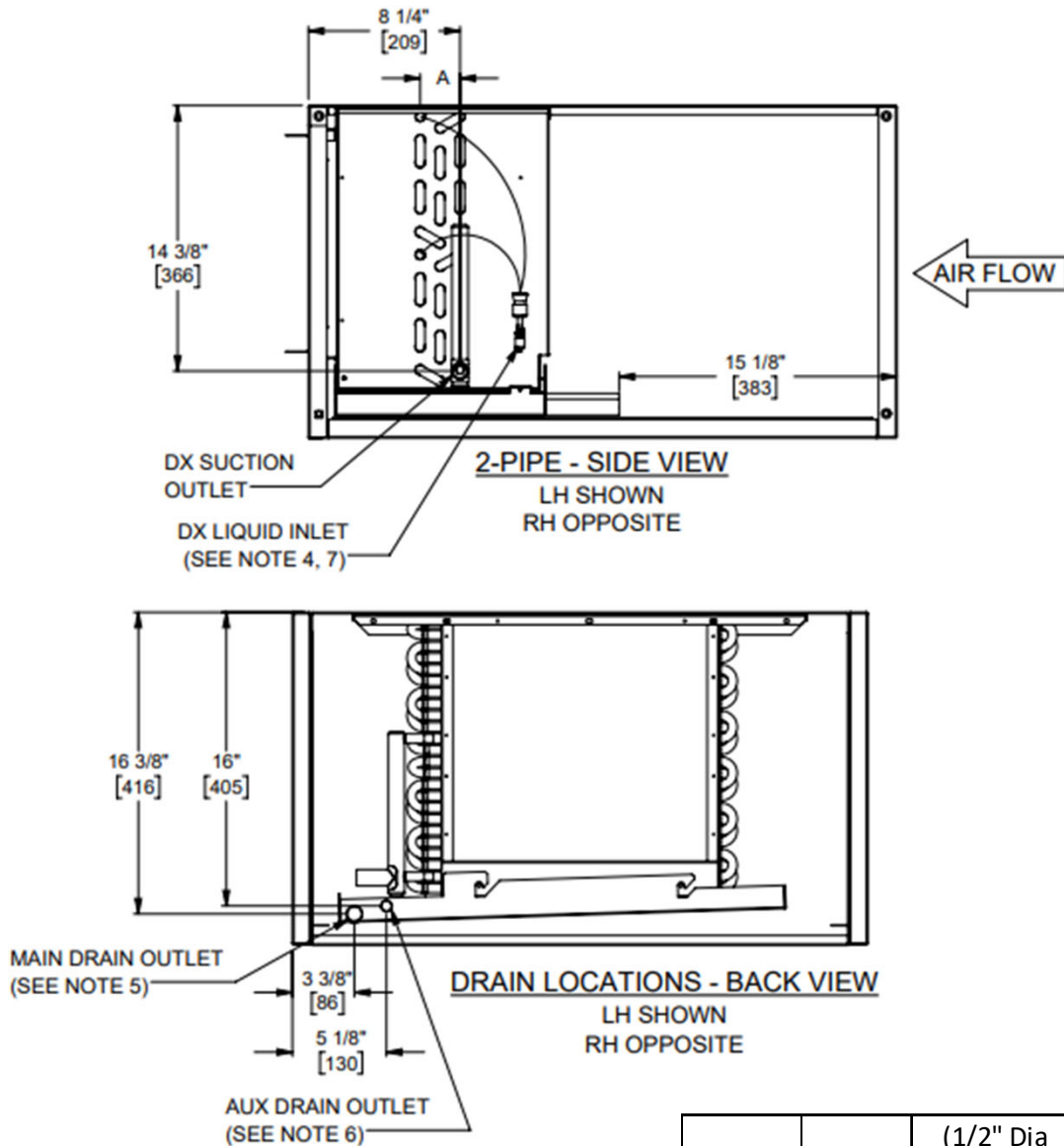
WATER & DX COIL CONNECTION SIZES				WATER & DX COIL CONNECTION SIZES			
UNIT SIZE	TYPE	# ROWS	CONN. SIZE (OD)	UNIT SIZE	TYPE	# ROWS	CONN. SIZE (OD)
06	HW	1	5/8	14	HW	1	7/8
06	HW	2	5/8	14	HW	2	7/8
06	HW	3	7/8	14	HW	3	1 1/8
06	HW	4	7/8	14	HW	4	1 1/8
06	CW OR DX	3	7/8	14	CW OR DX	3	1 1/8
06	CW OR DX	4	7/8	14	CW OR DX	4	1 1/8
06	CW OR DX	6	7/8	14	CW OR DX	6	1 1/8
08	HW	1	5/8	16	HW	1	7/8
08	HW	2	5/8	16	HW	2	7/8
08	HW	3	7/8	16	HW	3	1 1/8
08	HW	4	7/8	16	HW	4	1 1/8
08	CW OR DX	3	7/8	16	CW OR DX	3	1 1/8
08	CW OR DX	4	7/8	16	CW OR DX	4	1 1/8
08	CW OR DX	6	7/8	16	CW OR DX	6	1 1/8
10	HW	1	5/8	18	HW	1	7/8
10	HW	2	5/8	18	HW	2	7/8
10	HW	3	7/8	18	HW	3	1 1/8
10	HW	4	7/8	18	HW	4	1 1/8
10	CW OR DX	3	7/8	18	CW OR DX	3	1 1/8
10	CW OR DX	4	7/8	18	CW OR DX	4	1 1/8
10	CW OR DX	6	7/8	18	CW OR DX	6	1 1/8
12	HW	1	5/8	20	HW	1	7/8
12	HW	2	5/8	20	HW	2	7/8
12	HW	3	7/8	20	HW	3	1 1/8
12	HW	4	7/8	20	HW	4	1 1/8
12	CW OR DX	3	7/8	20	CW OR DX	3	1 1/8
12	CW OR DX	4	7/8	20	CW OR DX	4	1 1/8
12	CW OR DX	6	7/8	20	CW OR DX	6	1 1/8

NOTES:

1. Tables apply to 1/2" and 3/8" tube diameters.
2. Number of circuits does not affect coil connection sizes.

RAHC Series A

Horizontal High Performance Exposed – Field Connections – 2 Pipe DX Coil



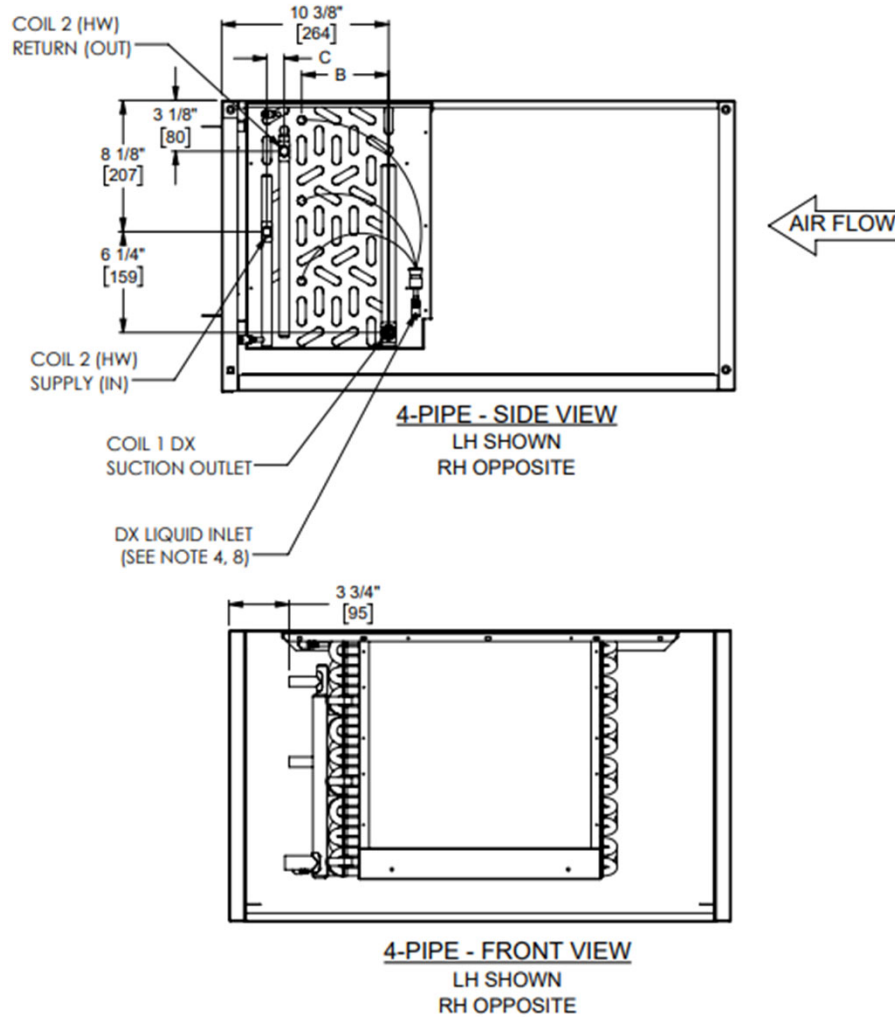
Unit Type	DX Coil Rows	(1/2" Dia Tubing)	
		A	
		IN	MM
2 Pipe Cooling	3	2.13	55
	4	3.25	82
	6	5.38	137

NOTES:

- All dimensions are inches [millimeters] All dimensions 1/2 [13mm]. Metric values are soft conversion.
- All drawings subject to change without notice.
- Model "RAHCA" unit shown. Side panel hidden for clarity.
- Connection Size: See Page 12 Coil Connections.. Stainless steel drain pan has 3/4" MPT galvanized steel outlet.
- Standard externally foam coated galvanized steel drain pan has 7/8" ODM copper outlet. Stainless steel drain pan has 3/4" MPT galvanized steel outlet.
- Aux. drain outlet is 5/8" ODM copper or 3/8" MPT galvanized steel respectively.
- Liquid Inlet arrangement may vary

RAHC Series A

Horizontal High Performance Exposed – Field Connections – 4 Pipe DX 1/2" Dia. Tubing Re-Heat



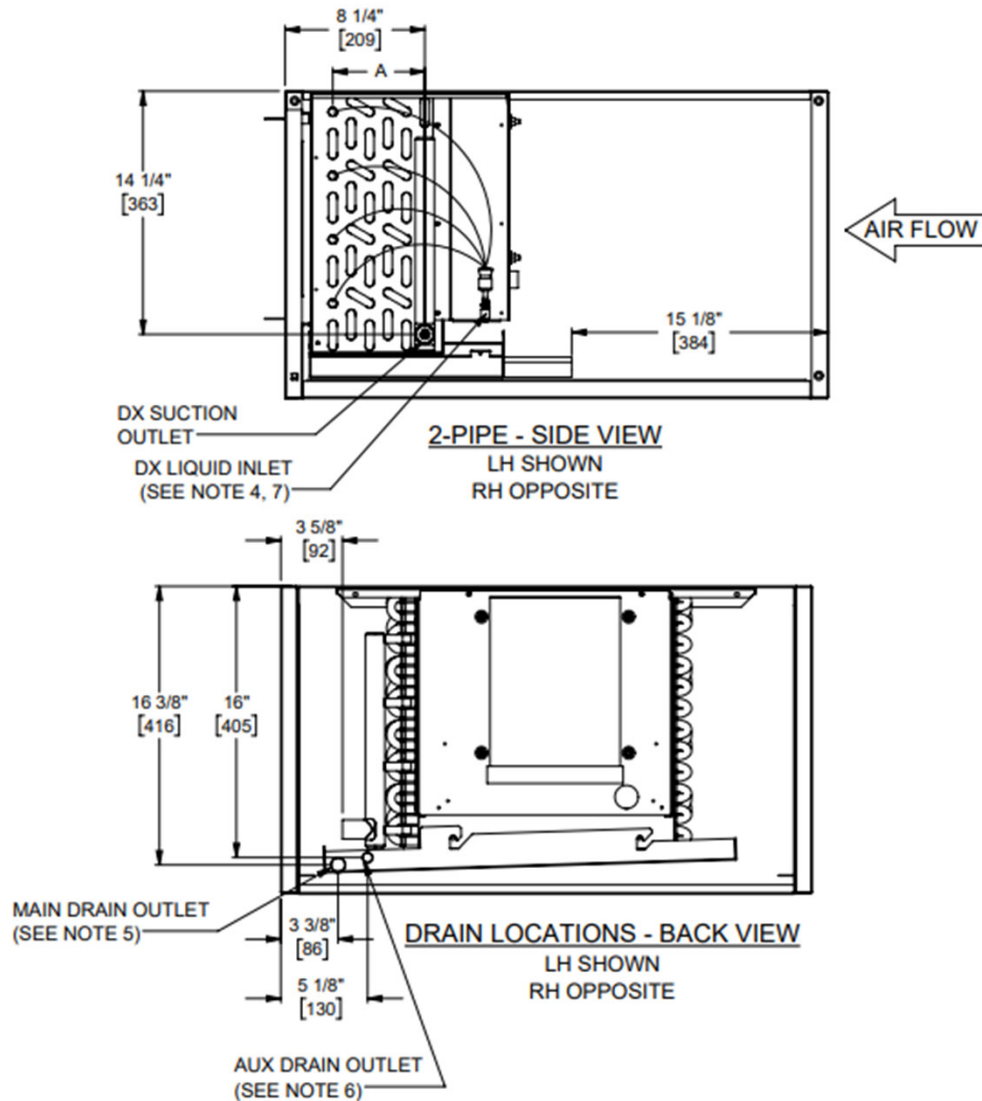
Unit Type	Coil 1 DX Rows	Coil 2 HW Rows	(1/2" Dia Tubing)					
			A		B		C	
			IN	MM	IN	MM	IN	MM
4 Pipe ReHeat	3	1	6.75	171	2.13	52	0.88	22
	3	2	6.75	171	2.13	52	1.13	29
	3	3	6.75	171	2.13	52	2.13	54
	4	1	6.75	171	3.25	83	1.00	25
	4	2	6.75	171	3.25	83	1.00	25
	3	4	8.88	225	2.13	52	3.25	83
	4	3	8.88	225	3.25	83	2.25	54
	4	4	8.88	225	3.25	83	3.25	83
	6	1	8.88	225	5.50	140	0.88	22
	6	2	8.88	225	5.50	140	1.13	27

NOTES:

- All dimensions are inches [millimeters] All dimensions 1/2 [13mm]. Metric values are soft conversion.
- All drawings subject to change without notice.
- Model "RAHCA" unit shown. Side panel hidden for clarity.
- Connection Size: See Page 12 Coil Connections.. Stainless steel drain pan has 3/4" MPT galvanize steel outlet.
- Standard externally foam coated galvanize steel drain pan has 7/8" ODM copper outlet. Stainless steel drain pan has 3/4" MPT galvanize steel outlet.
- Aux. drain outlet is 5/8" ODM copper or 3/8" MPT galvanized steel respectively.
- Liquid Inlet arrangement may vary

RAHC Series A

Horizontal High Performance Exposed – Field Connections – 2 Pipe DX Coil & Electric Pre-Heat



Unit Type	DX Coil Rows	(1/2" Dia Tubing)	
		A	
		IN	MM
2 Pipe Cooling	3	2.13	55
	4	3.25	82
	6	5.38	137

NOTES:

1. All dimensions are inches [millimeters] All dimensions 1/2 [13mm]. Metric values are soft conversion.
2. All drawings subject to change without notice.
3. Model "RAHCA" unit shown. Side panel hidden for clarity.
4. Connection Size: See Page 12 Coil Connections.. Stainless steel drain pan has 3/4" MPT galvanized steel outlet.
5. Standard externally foam coated galvanized steel drain pan has 7/8" ODM copper outlet. Stainless steel drain pan has 3/4" MPT galvanized steel outlet.
6. Aux. drain outlet is 5/8" ODM copper or 3/8" MPT galvanized steel respectively.
7. Liquid Inlet arrangement may vary